



Sumitomo Parallel Shaft
BuddyBox Combines Cyclo
Input with Helical Gear
Output

Sumitomo Parallel Shaft Screw Conveyor Drives

Sumitomo Helical BuddyBox (HBB) combines the quiet, efficient, and reliable performance of the Cyclo input with the robust helical gear output, creating a compact and flexible solution for a wide range of output speeds and torque requirements. The HBB design provides a simple splash lubrication system that extends the unit's lifespan and operates without thermal limitations, eliminating the need for an external fan. Sumitomo offers durable, high-performance solutions for reliable operation with minimal maintenance.

The parallel shaft design of the HBB gearmotor is the most common type of gearmotor used on a screw conveyor. This design is cost-effective and matches the height and width of most screw conveyors more closely than other drive arrangements. The HBB design does extend the overall length of the conveyor when compared to a right-angle gearmotor such as the Sumitomo BBB gearmotor, or a belt or chain driven system. Sumitomo offers a wide variety of mounting options, including a CEMA standard screw conveyor adaptor, for seamless integration into virtually any application. BBB gearmotors are available with space-saving integral motors or c-face adapters that allow for a wide variety of third-party motor options.

Features

Modular Design: Interchangeable components offer flexibility for diverse applications

Cycloidal Speed Reduction Technology: Quiet, efficient, and reliable operation with high torque density and compact size

Taper Grip Bushings: Simplifies shaft mounting while ensuring self-aligning, backlash-free torque transmission

Benefits

Long Life Span: High quality gearing combined with cycloidal or planetary inputs provide superior service life

CEMA Screw Conveyor Drive: Simple and cost-effective drive packages are available for CEMA screw conveyor applications

Compact: Robust, power-dense design delivers high shock load capabilities and higher service factors



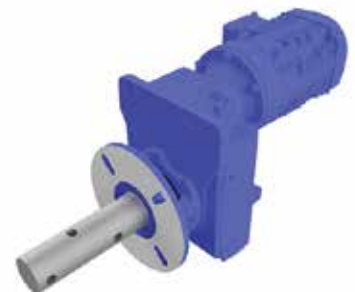
KWS Manufacturing
3041 Conveyor Drive
Burleson, Texas 76028

Toll Free: (800) 543-6558
Phone: (817) 295-2247
Fax: (817) 447-8528

www.kwsmfg.com



C-Face Adapter Allows Use
with Customer Specified
Motor



Gearmotor with Integral
Motor is Compact and Cost
Effective