

Screw Take Ups are Externally Mounted for Easy Access and Adjustment

KWS Bucket Elevator Take-Ups

Bucket elevators are not maintenance-free machines. Routine maintenance and periodic inspection of the chain or belt is required to maximize elevator life. Adjustment of the take-ups is required as the chain or belt stretches. Frequent checks of the chain for proper slack and belt for proper tension with appropriate adjustment of take-ups are important for long chain or belt life.

There are various take-up styles used for adjustment. KWS offers two primary options: Adjustable screw type and Internal gravity or counter-weight type.

Adjustable Screw Type Take-Ups Features

Screw type take-ups can be used with chain or belt elevators and are usually in the boot section. However, if the boot section is not easily accessible or the boot shaft is required to be fixed in its lowest possible location for optimal boot cleanout, KWS offers an adjustable screw type take-up located at the head section.

Benefits

Screw type take-ups are externally mounted to the boot or head section for quick maintenance accessibility. Take-up adjustments can be made on each side of the boot or head shaft independently to aid in belt alignment and tracking. All adjustments are made using common tools.

Internal Gravity or Counter-Weight type Take-Ups Features

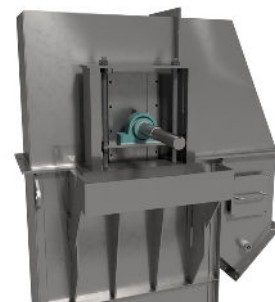
Internal gravity or counter-weight type take-ups are typically used with chain elevators to accurately and automatically maintain the chain slack to prevent any slippage. Gravity take-ups are located in the boot section and typically used in applications that require a dust-tight housing to contain corrosive or dangerous bulk materials or if reduced maintenance is desired.

Benefits

On an internal gravity take-up, the boot shaft does not protrude through the casing eliminating the need for shaft seals. Hard Iron bearings are located internally on the boot shaft for extended bearing life.



Internal Gravity Take Ups Automatically Maintain Chain or Belt Tension



Head Take Up is Optional for Special Applications



KWS Manufacturing
3041 Conveyor Drive
Burlleson, Texas 76028

Toll Free: (800) 543-6558
Phone: (817) 295-2247
Fax: (817) 447-8528

www.kwsmfg.com