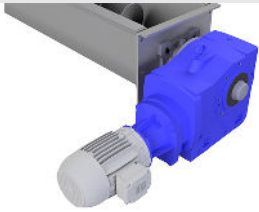




# Features & Benefits



Nord RHB Right Angle Gearmotors and Reducers Offer Excellent Reliability, and Long Service Life

## Nord Right-Angle Helical Bevel Screw Conveyor Drives

Nord Right-Angle Helical Bevel (RHB) gearmotors provide a 90-degree offset between the motor shaft and output shaft, ideal for applications that require compact footprints. RHB gearmotors offer excellent reliability, low maintenance, and a long service life, while also delivering impressive axial and radial load capacities. Nord's modular design can be customized to meet specific power (HP) and speed (RPM) requirements.

The right-angle design of the RHB gearmotor allows the overall length of a screw conveyor to be shorter than a traditional parallel shaft gearmotor such as the Nord Clincher gearmotor. Nord offers a wide variety of mounting options, including a CEMA standard screw conveyor adaptor. RHB gearmotors are available with space-saving integral motors or C-face adapters for a wide variety of third-party motor options.

### Features

**Right Angle Design** – For applications that require compact footprints and flexible installation

**Modular Design** – Accommodates numerous input options, including integral motors and adaptors

**Quadrilip Seal System** – 3 lip seals plus a grease barrier seals both input and output shafts

### Benefits

**Long Life Span** – Service life is extended with high quality gearing and spherical roller bearings

**Configure for Multiple Applications** – Integral and C-Face motors are adaptable for most installations

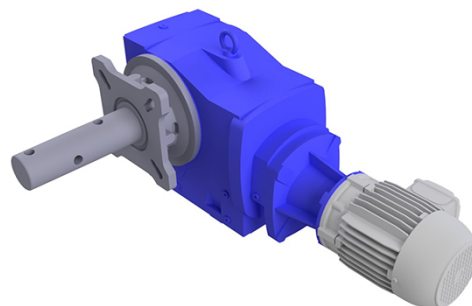
**Low Maintainence** – Rugged, leak-proof design is almost maintenance free



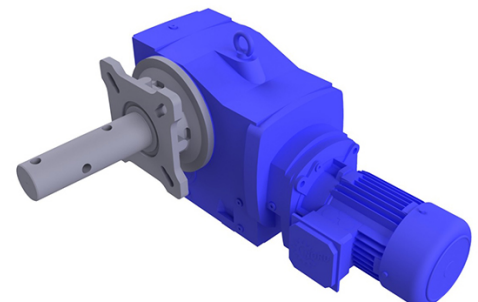
**KWS Manufacturing**  
3041 Conveyor Drive  
Burleson, Texas 76028

Toll Free: (800) 543-6558  
Phone: (817) 295-2247  
Fax: (817) 447-8528

[www.kwsmfg.com](http://www.kwsmfg.com)



C-Face Adapters Can Accommodate Customer Specified Motors



Integral Gearmotors are Compact and Space Saving