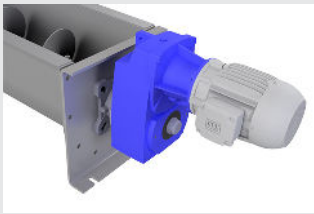




Features & Benefits



Nord Clincher Parallel Shaft Gearmotors and Reducers are Used on Many Screw Conveyor Applications

Nord Clincher Parallel Shaft Screw Conveyor Drives

Nord Clincher parallel shaft gearmotors and reducers are commonly used in many screw conveyor applications. With AGMA 13, case-hardened, high-quality gearing, and the Quadralip sealing system, the Nord Clincher is designed for demanding environments. The Clincher features oversized, re-greaseable spherical bearings that efficiently absorb high load conditions, contributing to long service life. Clincher screw conveyor drives come complete with a CEMA adapter and 3-bolt drive shaft. Options for motor selection include a space-saving integral motor design or a c-face adapter which is compatible with a wide variety of third-party motors.

The Clincher's parallel shaft design is the most common type of gearmotor used on a screw conveyor. This design is cost-effective and matches the height and width of most screw conveyors more closely than other drive arrangements. The Clincher design does extend the overall length of the conveyor when compared to a right-angle gearmotor such as the Nord Right-Angle Helical Bevel gearmotor, or a belt or chain driven system.

Features

AGMQA 13 Gearing – High quality helical-bevel gearing improves efficiency and torque rating

Modular Design – Accommodates numerous input options, including integral motors and adaptors

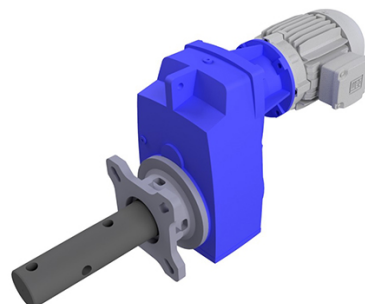
Quadrilip Seal System
Hanging Configuration – 3 lip seals plus a grease barrier seals both input and output shafts

Benefits

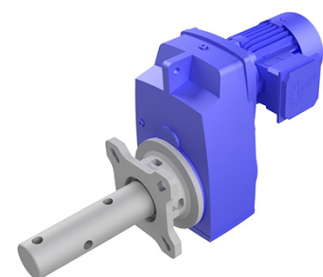
Long Life Span – Service life is extended with high quality gearing and spherical roller bearings

Configure for Multiple Applications – Integral and C-Face motors are adaptable for most installations

Low Maintenance – Rugged, leak-proof design is almost maintenance free



C-Face Adapters Can Accommodate Customer Specified Motors



C-Face Adapters Can Accommodate Customer Specified Motors



KWS Manufacturing

3041 Conveyor Drive
Burleson, Texas 76028

Toll Free: (800) 543-6558

Phone: (817) 295-2247

Fax: (817) 447-8528

www.kwsmfg.com