



Screws are Close-Coupled and Clocked to Eliminate Hanger Bearings

Bolt-In Angle Hold-Downs for Troughs

Introduction

Screw conveyors are ideal for conveying most bulk materials and have been in use for over 100-years. Every bulk material handling application is unique, and expertise is required to provide a long-lasting, maintenance-free solution. Since 1972, KWS has been the leader in the bulk material handling industry and continues to provide innovative solutions for thousands of applications.

Most screw conveyors utilize hanger bearings when conveying free flowing bulk materials such as grains, salt, and limestone. Hanger bearings are typically required when a screw conveyor exceeds 20-feet in overall length. Some industries such as animal rendering, minerals processing and wastewater treatment require screw conveyors to be designed without hanger bearings. For these industries, hanger bearings can become a restriction to bulk material flow, causing downtime and excess maintenance.

To eliminate hanger bearings, KWS offers screw conveyors with close-coupled screw sections and angle hold-downs. Angle hold-downs are required to keep screw sections in place in the trough. Bulk materials tend to get under screw sections while in operation if not held in place by an angle hold-down. For ease of maintenance, KWS offers a unique bolt-in angle hold-down design. When utilizing a bolt-in angle hold-down, a screw may be fully accessed within minutes, minimizing costly downtime.

Features

Heavy Duty Construction – Designed to withstand extreme forces inside screw conveyor

Quick Removal – Access and removal can be accomplished in minutes

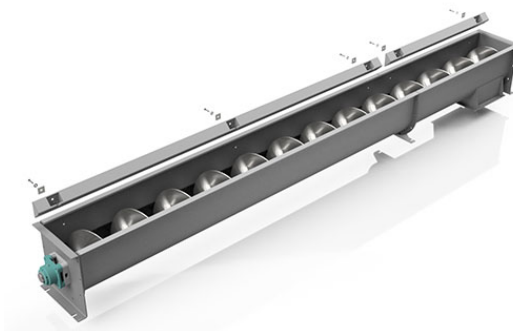
Cost Effective – Cost of bolt-in style is comparable to weld-in angle hold-downs

Benefits

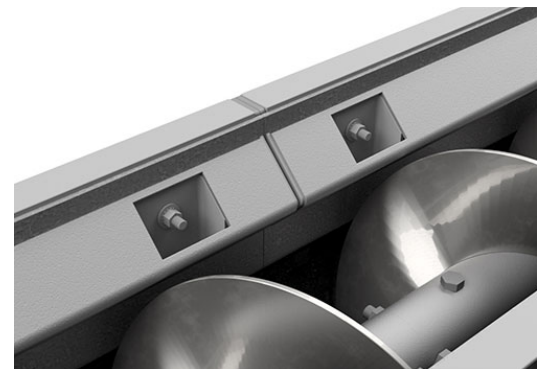
Reduced Downtime – Bolt-in angle hold-downs can be removed in minutes saving time and improving productivity

Long Lasting – Integral and C-Face motors are adaptable for most installations

Easy Retrofit – Existing screw conveyors can easily be fitted with bolt-in angle hold-downs



Exploded View Shows How Easily KWS Bolt-In Hold-Downs Can Be Removed



Hold-Downs Bolt to Side of Trough in Multiple Locations



KWS Manufacturing

3041 Conveyor Drive
Burleson, Texas 76028

Toll Free: (800) 543-6558

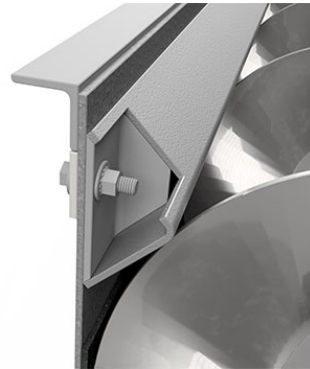
Phone: (817) 295-2247

Fax: (817) 447-8528

www.kwsmfg.com



Features & Benefits



KWS Bolt-In Hold-Down is Reinforced on
Outside of Trough



KWS Manufacturing

3041 Conveyor Drive
Burleson, Texas 76028

Toll Free: (800) 543-6558
Phone: (817) 295-2247
Fax: (817) 447-8528

www.kwsmfg.com