



What are Screw Conveyors Used for?

Question

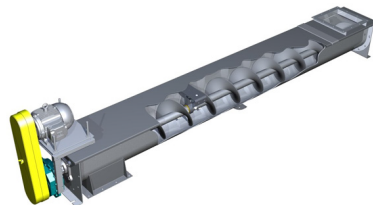
What are Screw Conveyors Used for?

Answer

Screw conveyors are used to convey bulk materials from one part of a process to another and are available in a wide range of sizes, lengths, configurations, and materials of construction. Screw conveyors are always control fed at the inlet by a device that regulates the flow such as a rotary airlock, screw feeder, belt conveyor, or even another screw conveyor.

Screw conveyors are typically designed to convey bulk materials at 15, 30, or 45-percent trough loading, depending upon material characteristics of the specific bulk material. As a general rule, trough loading of 45-percent can be used for light, free-flowing and non-abrasive bulk materials. Trough loadings of 15 and 30-percent are typically used for denser, sluggish, and more abrasive bulk materials.

KWS Video: Screw Conveyor vs. Screw Feeder



Screw Conveyors are Always Control Fed at Inlet



Screw Conveyor Transfers Pulverized Limestone from Mill to Belt Conveyor



KWS Manufacturing

3041 Conveyor Drive
Burlison, Texas 76028

Toll Free: (800) 543-6558
Phone: (817) 295-2247
Fax: (817) 447-8528

www.kwsmfg.com