



Standard Dimensions for UHMW Liners for Screw Conveyors

Question

I have several KWS screw conveyors that have been in service for many years. The screw conveyors have UHMW liners, and the liners have become worn and need replacement. How do I get the right replacement liners for my screw conveyors?

Answer

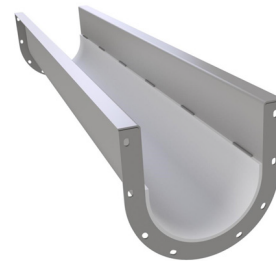
Thanks for purchasing from KWS and we are glad that your screw conveyors have been in service for a long time. UHMW liners are a wear component and require replacing on occasion. Most KWS screw conveyors have a name plate on the side with the identifying job number. Please take a photo of the name plates and send them to us. We can easily locate the past job and provide the proper replacement liners.

If you are not able to locate a KWS name plate, KWS standard liners for each screw conveyor size extend 1-inch above the roll line of the trough. The roll line is the location where the curved portion of the trough extends vertically. Please see the diagram below. Extending the liner 1-inch above the roll line provides superior performance when compared to liners that only extend from roll line to roll line. The 1-inch extension offers greater wear area and keeps the liner hold downs out of the way of the rotating screw.

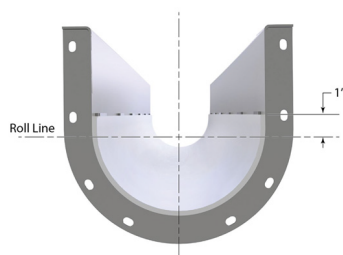
KWS can also replace liners from other conveyor manufacturers. All we need to know is the screw conveyor diameter, liner material and thickness, liner length, and distance liner extends above the roll line. Most liner lengths are the full length of the trough section if the liner material is metal. UHMW liners are typically 4-feet in length.



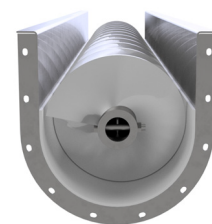
KWS Shaftless Screw Conveyor with UHMW Liner



KWS U-Trough with UHMW Liner in Place



Liner Extends 1-Inch Above Roll Line of Trough



Extending Liner 1-Inch Above Roll Line Provide Superior Performance



KWS Manufacturing

3041 Conveyor Drive
Burlleson, Texas 76028

Toll Free: (800) 543-6558
Phone: (817) 295-2247
Fax: (817) 447-8528

www.kwsmfg.com