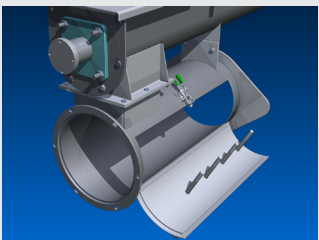
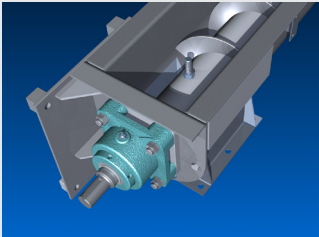
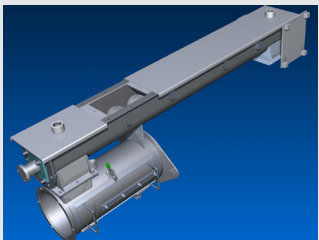




Plant Name and Location

Mother Parker's Tea & Coffee

Fort Worth, TX



**Design
Engineering
Manufacturing**

KWS Manufacturing

3041 Conveyor Drive
Burleson, Texas 76028

Toll Free: (800) 543-6558

Phone: (817) 295-2247

Fax: (817) 447-8528

www.kwsmfg.com

Waste Coffee Conveying System

General Description of the Application

Mother Parker's Tea and Coffee produces high quality products for the beverage industry. During the coffee roasting and grinding process, waste powder is created and needs to be conveyed out of the system for disposal. The existing screw conveyor and delumper needed be replaced with an improved system that would reduce maintenance and last much longer. Mother Parker's looked to KWS to improve their existing process equipment without changing their process.

Design Parameters of Application

Product Type: Coffee Waste Powder

Material Density: 38 Lbs. per Cubic Foot

System Capacity: 50 Cubic Feet per Hour

Duty: 24 Hours per Day, 7 Days per Week

Advantages Provided by KWS

The Customer wanted a direct replacement for their worn-out equipment that was used for conveying, aerating, mixing, and breaking up lumps of coffee waste near the end of their process line. The old system leaked waste at elevated temperatures out of the conveyor covers and shaft seals. Additionally, product would clog up in the conveyor resulting in excessive material packing. The material packing caused the overflow door to open resulting in spillage and shutdown. The existing conveyor was completely surrounded by operational equipment and the Customer needed new equipment that fit exactly with other mating machinery. The Customer also wanted to reuse their existing motors and gear reducers. KWS identified the space constraints and found solutions. KWS engineers visited the Customer's plant multiple times and worked closely with plant and project engineers. Working together with the Customer, KWS was able to supply a reliable duplicate system with quick delivery.

Special Features of KWS Design

KWS engineers designed a new high-quality system that was a completely interchangeable replacement to bolt exactly where the old system used to go. KWS engineered a heavier duty system constructed of stainless steel for longer life and corrosion resistance. The screw conveyor was supplied as dust-tight with fully enclosed cover and shaft seals to contain dust. The installation of the new system was very easy; installers were able to mount it without any alterations needed. During the design, KWS engineers coordinated with the engineers and maintenance personnel from Mother Parker's to make sure the new equipment would perfectly match up to the existing process equipment.

"We will look to KWS for future equipment needs."

-Cory Underwood, Maintenance Foreman – Mother Parker's Tea and Coffee