



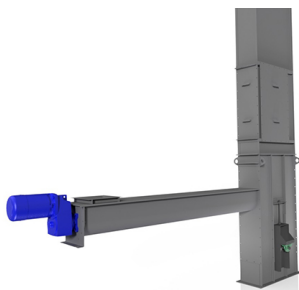
Shear Pin Sprockets for Screw Conveyors

Question

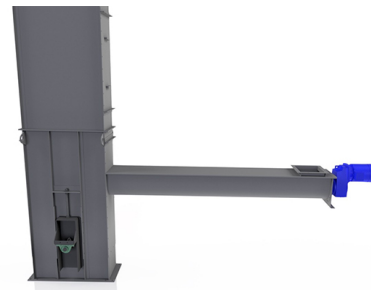
We're designing a bulk material handling system and need to elevate material to a higher level. Our layout calls for a screw conveyor to move material horizontally, and we're wondering if it can feed directly into the boot of a bucket elevator. Is this a recommended configuration? Are there any special considerations we should be aware of? We want to ensure proper material flow and avoid potential issues like backflow or bridging at the inlet. Can KWS provide a bucket elevator that's designed to be fed directly by a screw conveyor?

Answer

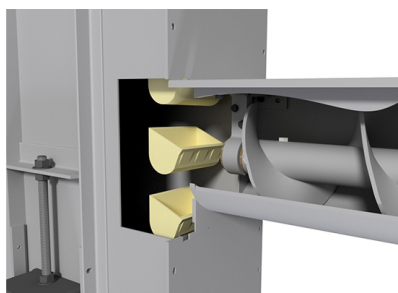
KWS regularly designs bucket elevators specifically to allow direct feed from a screw conveyor. This is a common and efficient layout in many bulk handling systems. We engineer the bucket elevator boot section with a flanged inlet that matches the discharge of the screw conveyor, ensuring smooth material flow. All KWS equipment is custom engineered for your application, so we'll ensure the design promotes optimal performance. Contact KWS to review your system layout and provide the best solution for seamless integration.



Direct Feeding from a Screw Conveyor to a Bucket Elevator is Very Efficient



Transitions are Eliminated with Direct Feeding



Screw Conveyor Diameter is Matched to Bucket Width for Maximum Loading



KWS Manufacturing

3041 Conveyor Drive
Burleson, Texas 76028

Toll Free: (800) 543-6558

Phone: (817) 295-2247

Fax: (817) 447-8528

www.kwsmfg.com