

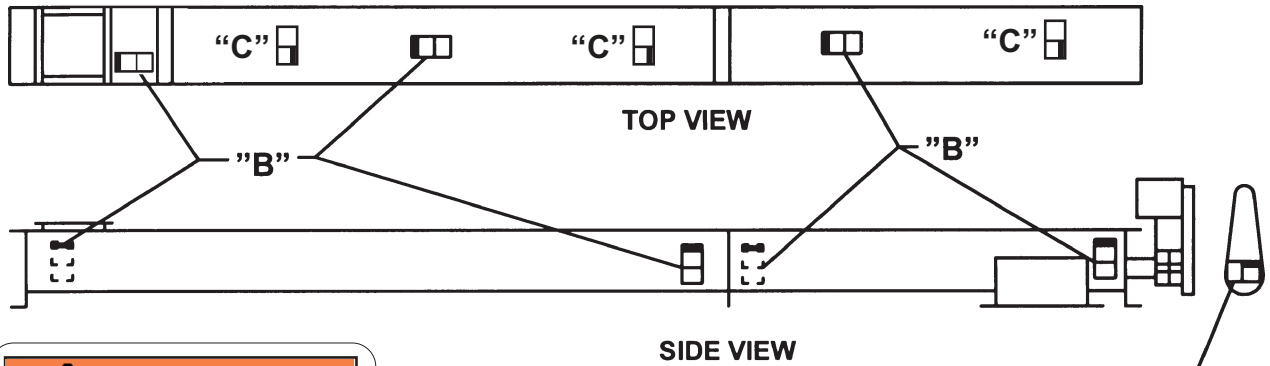
CEMA Safety Label Placement Guidelines

CEMA Safety Labels

Placement Guidelines

Product: Bulk Handling Equipment

Equipment: Screw Conveyors



⚠ WARNING

CVS930011

Exposed screw and moving parts can cause severe injury

LOCK OUT POWER before removing cover or servicing

<http://www.cemanet.org>

"B"

To be placed on inlets and discharges, troughs, covers, and inspection doors of screw conveyors to provide warning against exposed moving parts while in operation.

⚠ WARNING

CHR930001 <http://www.cemanet.org>

Exposed moving parts can cause severe injury

LOCK OUT POWER before removing guard

"A"

⚠ WARNING

CHS991026 <http://www.cemanet.org>

Walking or standing on conveyor covers or gratings can cause severe injury

STAY OFF

"C"

To be placed on removable guards to warn that operation of the machinery with guards removed would expose chains, belts, gears, shafts, pulleys, couplings, etc. which create hazards

- NEAR SIDE
- FAR SIDE

USE LABEL "A" ON BELT GUARD
 USE LABEL "B" ON ENDS OF TROUGH, MIDDLE OF COVERS AND AT INLET OPENING.
 USE LABEL "C": ON TOP OF COVERS

