



How to Install a Hanger in a Screw Conveyor

Question

I received an order of screw conveyor components and now need to assemble it into a complete run of screw conveyor. I'm not sure where to start and need some direction. How do I install a hanger in a screw conveyor?

Answer

When assembling loose components into a complete screw conveyor with more than one screw section, a hanger is needed to support each additional screw section to maintain proper alignment. Misalignment of screw sections can cause premature wear on coupling shafts and hanger bearings.

Start assembly from the drive end of the screw conveyor. Please refer to the CEMA Installation, Operations & Maintenance Manual that is provided with your order.

The following step-by-step procedure makes hanger installation easy -

Step One – Bolt all trough sections together and align properly.

Step Two – Install the drive trough end and drive unit with drive shaft.

Step Three – Place first screw section in trough starting at drive end.

Step Four – Insert first screw section onto drive shaft and install coupling bolts.

Step Five – Insert coupling shaft in opposite end of screw and install coupling bolts.

Step Six – Insert hanger with hanger bearing onto coupling shaft.

Step Seven – Insert second screw section on opposite end of coupling shaft and install coupling bolts.



KWS Manufacturing

3041 Conveyor Drive
Burlleson, Texas 76028

Toll Free: (800) 543-6558

Phone: (817) 295-2247

Fax: (817) 447-8528

www.kwsmfg.com



How to Install a Hanger in a Screw Conveyor

Step Eight – Place a piece of angle iron across the top of the U-trough at the hanger location and fasten the hanger to the angle iron using C-clamps. Begin tightening the clamps to make sure that the top of the hanger is pulled tight and flush with the top of the trough.

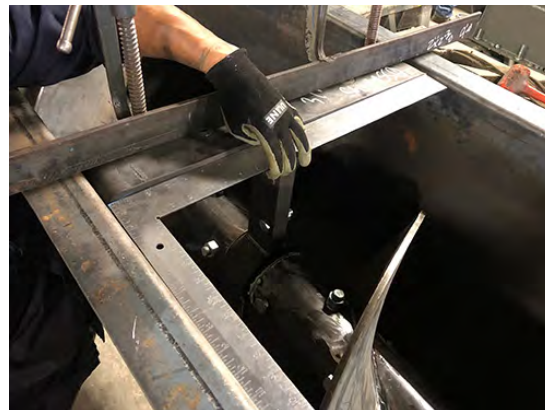


Step 8 – Hanger Being Raised in Trough Using C-Clamps

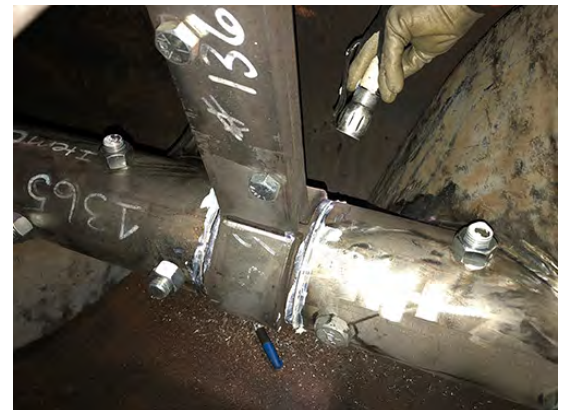


Step 8 – Hanger is Now Flush With Top of Trough

Step Nine – Make sure the hanger is perpendicular to the sides of the trough by using a framer's square. Make sure that the hanger bearing is evenly spaced on the coupling shaft and that the screw turns freely. The hanger is now in its proper location.



Step 9 – Checking for Perpendicularity with Framer's Square



Step 9 – Hanger Bearing Must be Equally Spaced Between Screw Sections



KWS Manufacturing
3041 Conveyor Drive
Burlison, Texas 76028

Toll Free: (800) 543-6558
Phone: (817) 295-2247
Fax: (817) 447-8528

www.kwsmfg.com



How to Install a Hanger in a Screw Conveyor

Step Ten – Mark the hanger holes on the trough and drill accordingly.



Step 10 – Hanger Holes on Each Side of Trough are Marked and Drilled

Step Eleven – Bolt the hanger in place and tighten to the torque specifications given in the CEMA Installation, Operations & Maintenance Manual. Make sure the hanger is still in the proper location by checking with the framer's square again.



Step 11 – Hanger Bolts are Installed and Tightened to Torque Specifications



Step 11 – Hanger is Now Properly Installed



**Design
Engineering
Manufacturing**

KWS Manufacturing

3041 Conveyor Drive
Burluson, Texas 76028

Toll Free: (800) 543-6558

Phone: (817) 295-2247

Fax: (817) 447-8528

www.kwsmfg.com

On screw conveyors over 30-feet in length, it is preferable to not locate hangers at the trough flange connections because of interference.