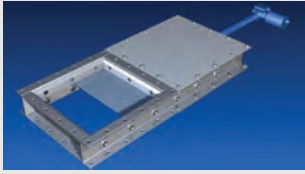




Features & Benefits



Electrically Actuated Slide Gates

KWS electrically actuated slide gates are used to control the flow of bulk materials in a wide variety of applications. Slide gates can be found on screw conveyors at intermediate discharge points, below hoppers as cut-off valves or even as emergency shut-off gates to stop material surges.

KWS electrically actuated slide gates use a linear electric actuator to move the slide plate to any position between fully opened or closed. Typically, 115 VAC is all that is required to power this multi-use gate. The slide plate is guided by bronze-bushed rollers on the bottom and 1/2" thick UHMW slide plate retainers on the top. The rollers require no grease and are adjustable in order to provide years of maintenance-free service. Replacement parts are easy to find and low cost. Most replacement parts can be sourced from any local power transmission distributor.

Features

Electric Actuator – KWS electrically actuated slide gates utilize heavy duty Acme screw linear actuators for long life, even in the harshest conditions. Each actuator comes standard with internally adjustable limit switches, automatic reset overload motor protection and IP50 protection for added reliability and functionality. Available options include potentiometer for intermediate positioning, IP52 enclosure for severe weather conditions and bellows boot for dusty environments.



Heavy Duty Slide Plate – Slide plates are made from 3/16 up to 1/2-inch thick solid steel. Corners are radiused in order to prevent the slide plate from binding up when actuating open or closed. Electric actuator is directly connected to the tail end of the slide plate for a compact and economical design.

UHMW Retainers – 1/2-inch thick Ultra High Molecular Weight Polyurethane (UHMW) slide plate retainers are held in place with a minimum of two countersunk bolts on each side. The countersunk bolts provide for free flow of bulk materials. The top of the UHMW retainers are beveled to divert product flow around the edges of the slide plate and protect the rollers below. UHMW is used because of its durability and high release properties.



KWS Manufacturing

3041 Conveyor Drive
Burleson, Texas 76028

Toll Free: (800) 543-6558

Phone: (817) 295-2247

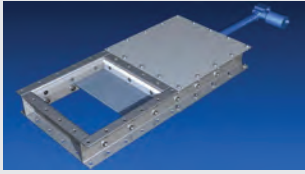
Fax: (817) 447-8528

www.kwsmfg.com

More on next page »



Features & Benefits



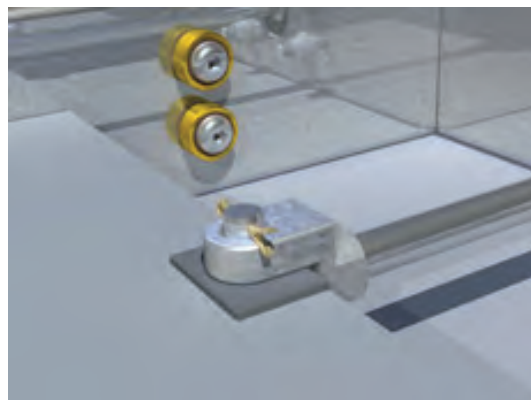
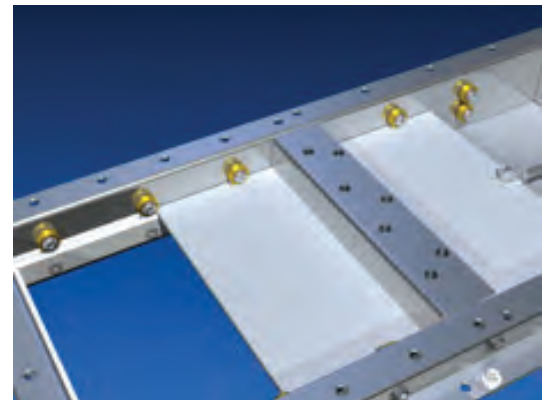
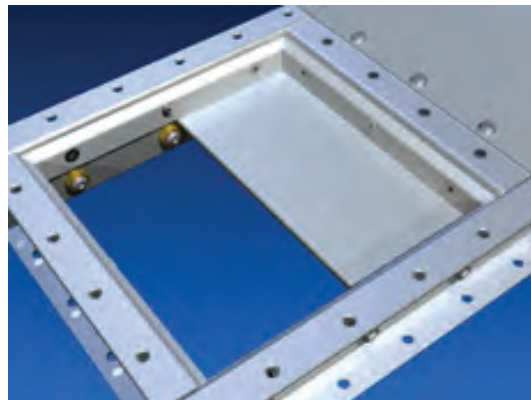
Electrically Actuated Slide Gates

Benefits

Versatile Design – Electrical actuators produce high force for shearing through bulk materials when located under a silo or hopper. Gate opening can be set to any position to allow for partial or full discharge of bulk materials. KWS electrically actuated slide gates are versatile and custom tailored to fit any application or design condition.

Rugged Construction – KWS electrically actuated slide gates can be designed and constructed from a wide variety of materials and thicknesses. Inlet and discharge transitions can be adapted to fit any opening configuration.

Compact Design – KWS electrically actuated slide gates are compact in design and will fit in almost any space with an overall height of only 5-inches.



**Design
Engineering
Manufacturing**

KWS Manufacturing

3041 Conveyor Drive
Burleson, Texas 76028

Toll Free: (800) 543-6558

Phone: (817) 295-2247

Fax: (817) 447-8528

www.kwsmfg.com