

 Environmental



Wastewater Process Equipment



*KWS builds high quality, engineered solutions to address the abrasive and corrosive environments found in the waste water treatment Industry.*

*KWS is an ISO 9001 certified manufacturer. Every component and assembly is manufactured in the USA by highly skilled craftsmen. All KWS welders are certified to American Welding Society (AWS) and American Society of Mechanical Engineers (ASME) codes.*

*KWS Environmental is a U.S. manufacturer of wastewater process equipment. We work closely with operators and engineers to optimize functionality and reliability.*

*As a full-service supplier, KWS Environmental provides:*

- 3D parametric engineered solutions*
- Project management from engineering to installation*
- Quality manufacturing*
- Commissioning support and supervision*
- Operations and maintenance training*
- Full maintenance/parts support after the sale... on time and with sensitivity to budget*

## Durability Defined

### DURABLE ELEMENTS

- Continuously Welded Screws
- KWS-350 High Strength Alloy Shaftless Spirals
- Rigid Shaftless Hold-Down Assemblies
- Single-Piece Machined Drive Shafts



- Tor-Ri-Flex Hanger Bearings



- Maintenance-Free Ceramic Liners

### 1. SCREENINGS WASHERS/COMPACTORS

- Available with shafted or shaftless screws
- Reduces disposal costs up to 75-percent
- Decreases odor and reduces fecal content
- Uses screened wastewater or process water as wash water



### 2. GRIT WASHERS/CLASSIFIERS

- Available with shafted or shaftless screws
- Reduces volatile organic and moisture content
- Separates excess water and reduces putrescent nature
- Large reservoir hopper capacities with compact footprint



### 3. SHAFTLESS SCREW CONVEYORS

- Alternative to cake pumps
- Conveys sticky, stringy and sluggish residuals
- Contains hazardous odors and gases with totally enclosed design
- Eliminates need for internal and tail bearings



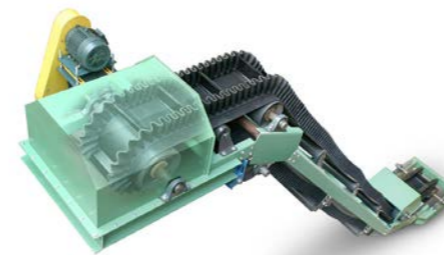
### 4. SHAFTED SCREW CONVEYORS

- Lower energy consumption when compared to pumps
- Contains hazardous odors and gases with totally enclosed design
- Reduces risk to personnel with bolted safety covers
- Distributes bulk materials to various locations using multiple inlet and discharge points



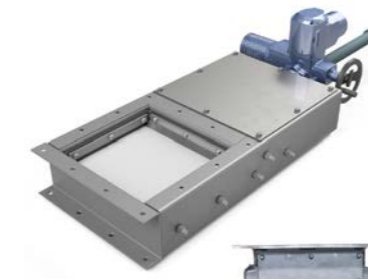
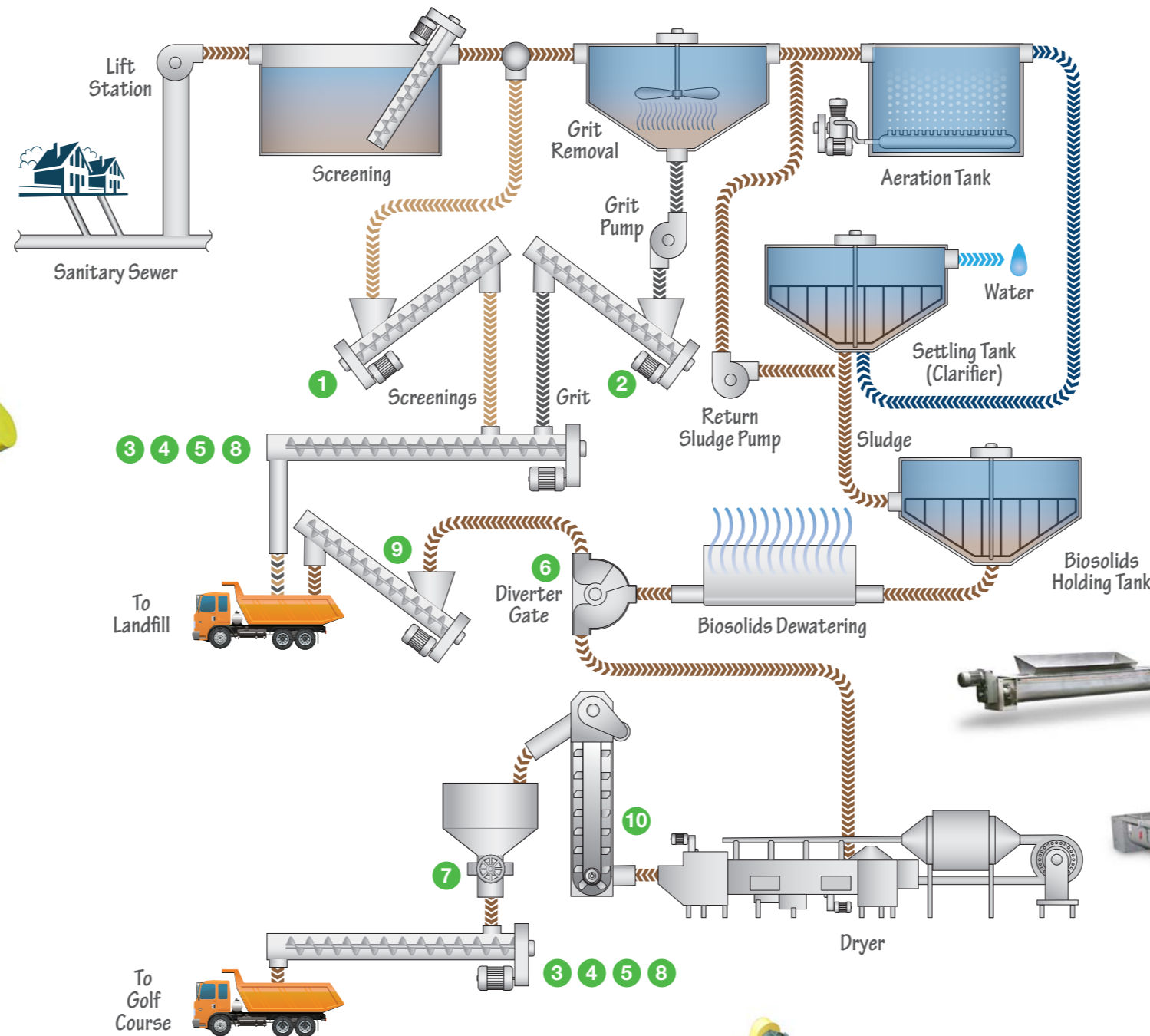
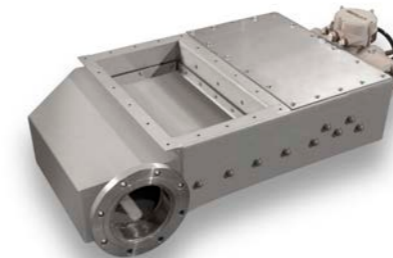
### 5. BELT CONVEYORS

- Horizontal and inclined conveying
- S and L-path designs available
- Accepts bulk materials from various upstream inlet points
- Optional designs for odor and liquid control



### 6. CENTRIFUGE DIVERTER GATES

- Separates low-solids biosolids during startup operation
- Eliminates housekeeping issues with liquid-tight construction
- Operates smoothly with stainless steel rollers and anti-friction bearings



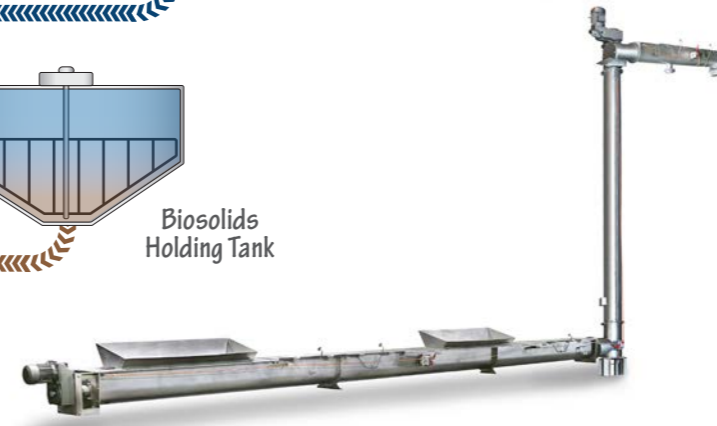
### 7. SLIDE GATES AND DIVERTER VALVES

- Diverts residuals to other areas of process
- Designed for heavy-duty applications
- Cuts through upset conditions with high-force actuators
- Operates smoothly with stainless steel rollers and anti-friction bearings



### 8. LOADOUT SYSTEMS

- Available in multiple arrangements
- Integrates with truck scales, level sensors, load cells, truck position sensors
- Operates by main control panel, remote panel or SCADA system
- Variable load-out rate - Loading in as little as two minutes
- Provides temporary residual storage



### 9. MIXERS

- Offers efficient mixing of wastewater solids and admixtures
- Provides recirculation to stabilization process
- Uses multiple ribbons or adjustable paddles for complete blending
- Compact design to fit any plant layout



### 10. BUCKET ELEVATORS

- Vertical conveying of residuals and bulk solids
- Contains hazardous odors and gases with totally enclosed design
- Ideal for dryer and incinerator applications
- Available with belt or chain type design



## Replacement Parts

### Available for Immediate Shipment

- Shaftless Spirals
- UHMW and Xylethon Liners
- Flexible Discharge Chutes



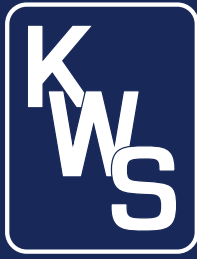
- CEMA Shaftless Screws



- CEMA Troughs



- CEMA Hanger Bearings



3041 Conveyor Drive | Burleson, TX 76028  
(800) 543-6558  
sales@kwsmsg.com | www.kwsmsg.com

